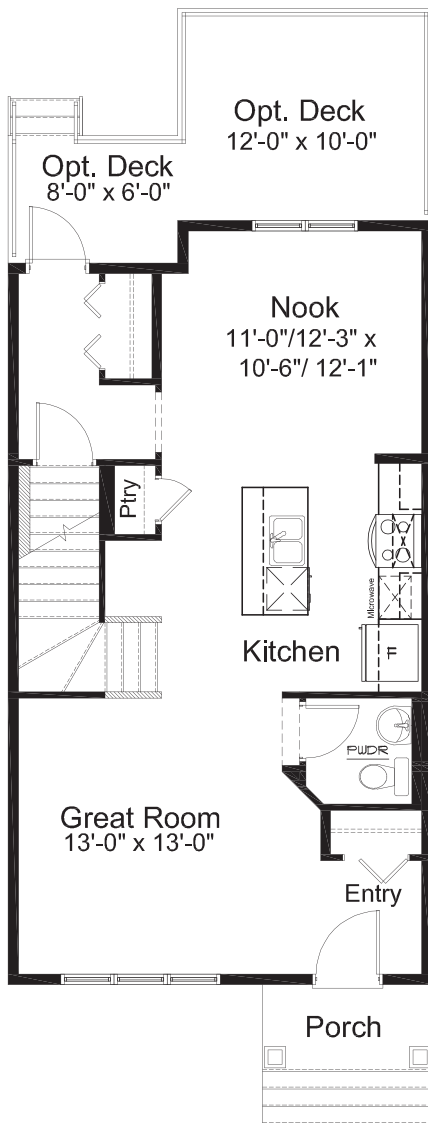


## BAINBRIDGE -CRAFTSMAN-

1,408 sq. ft.

Lot 34 | Block 2  
Calgary, Alberta



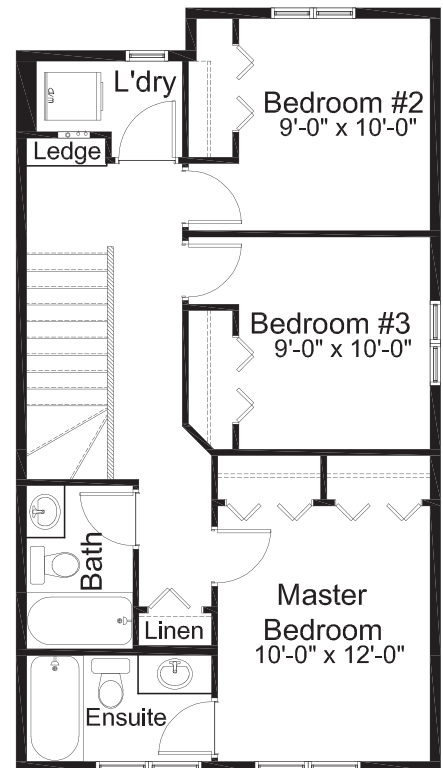
**MAIN FLOOR**  
704 sq. ft.



**FRONT ELEVATION**



**REAR ELEVATION**



**UPPER FLOOR**  
704 sq. ft.

Edited: March 4, 2021

# BAINBRIDGE MODEL FEATURES

- 3 Bedrooms | 2.5 Bath
- Open Concept Main Floor
- Stainless Steel Appliance Package
- Quartz Countertops Throughout
- Luxury Vinyl Plank Flooring
- Luxury Vinyl Tile Flooring
- Upper Floor Laundry
- 3-piece Master Ensuite
- Covered Front Porch
- Triple Pane Windows

## NOTES

---

---

---

---

---

---

## GET IN TOUCH

**Isaac Wegner**  
403-934-8409  
iwegner@madisonavegroup.com

**Dianne Miller**  
403-701-3022  
dmiller@madisonavegroup.com

**Michael Hare**  
587-223-0255  
mhare@madisonavegroup.com

**BELVEDERE RISE SALES OFFICE**  
EAST HILLS SHOPPING CENTRE, STONEY TRAIL & 17TH AVE SE  
CALGARY, AB

**NEW SHOW HOME COMING SOON!**  
78 BELVEDERE GREEN SE  
CALGARY, ALBERTA

**MADISON AVENUE GROUP**  
SUITE 1500, 150 9TH AVENUE SW CALGARY, AB. T2P 3H9  
INFO@MADISONAVEGROUP.COM | 403-217-9970 | MADISONAVEGROUP.COM

