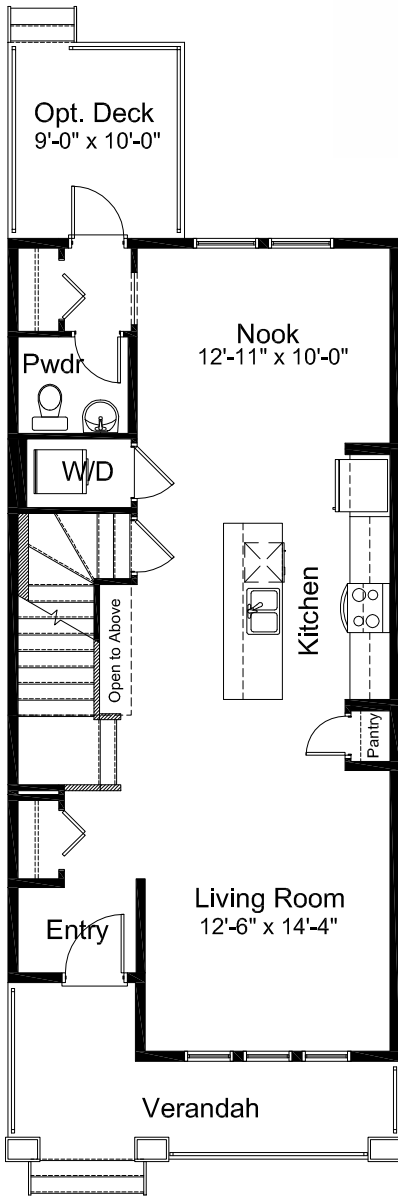


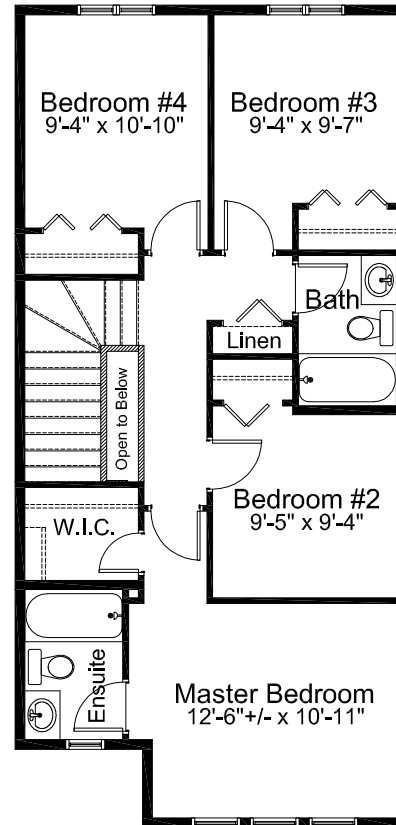


Craftsman with Verandah

Craftsman with Porch



MAIN FLOOR: 814 SQ. FT.

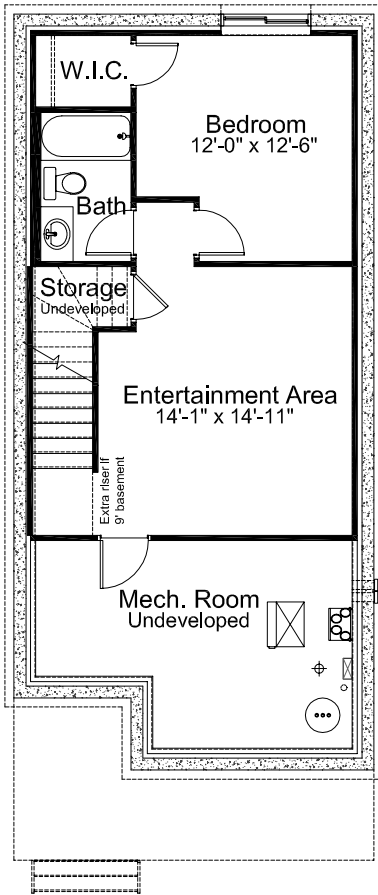


UPPER FLOOR: 803 SQ. FT.

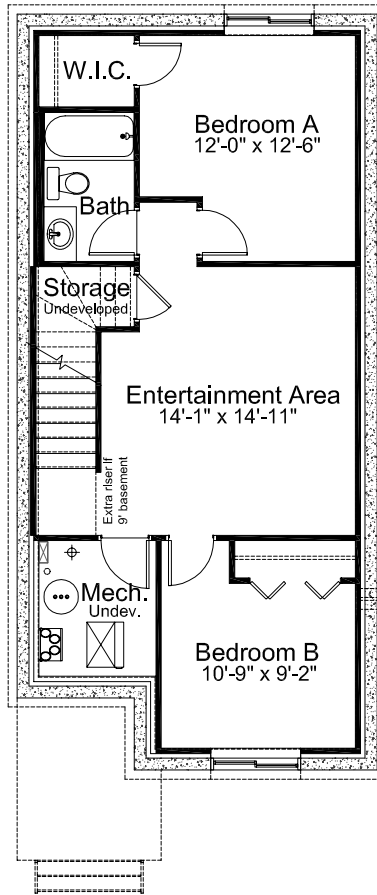
Edited: November 12, 2020

The Illustrations shown on this brochure are renderings only and do not represent the final look of your home. Elevations are also subject to approval from Architectural Controls. Madison Avenue Group retains the right to alter plans, features and specifications without notice. Standard floor plan does not include basement development, deck or options in the base price. Room sizes are approximate.

PRE-PLANNED OPTIONS

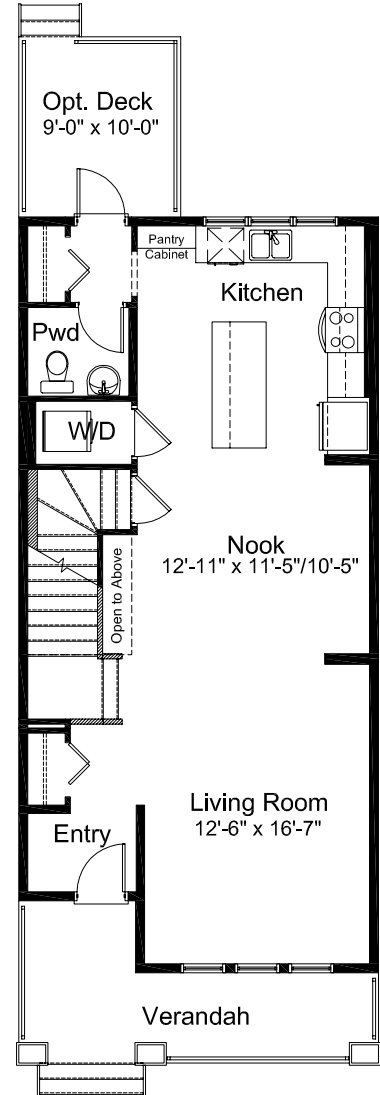


**BASEMENT SUITE OPTION
= 470 SQ. FT. OF
DEVELOPED AREA**



**BASEMENT DEVELOPMENT
OPTION #2= 604 SQ. FT.
OF DEVELOPED AREA**

Only available with Porch Elevation

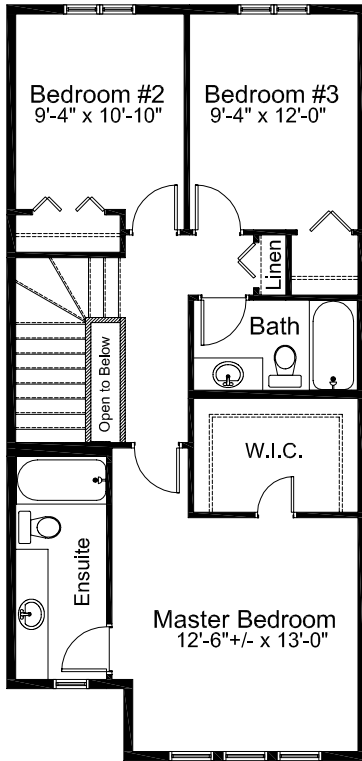


**KITCHEN/NOOK
& BACK ENTRANCE
LAYOUT OPTION**

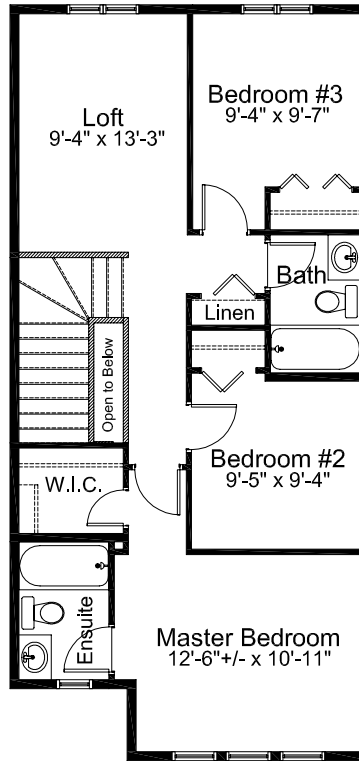
Edited: November 12, 2020

The illustrations shown on this brochure are renderings only and do not represent the final look of your home. Elevations are also subject to approval from Architectural Controls. Madison Avenue Group retains the right to alter plans, features and specifications without notice. Standard floor plan does not include basement development, deck or options in the base price. Room sizes are approximate.

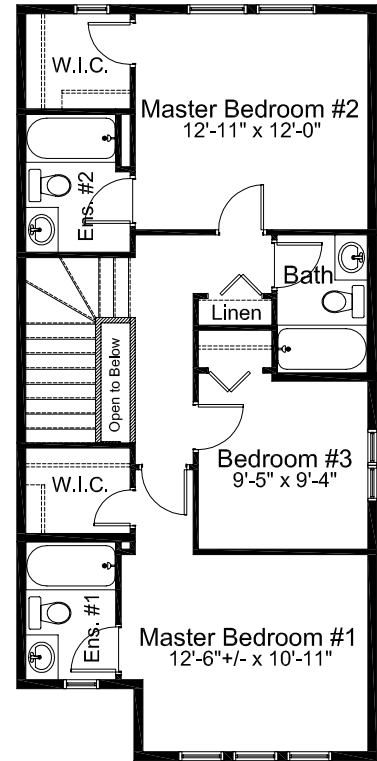
PRE-PLANNED OPTIONS



**3 BEDROOM
OPTION**



**3 BEDROOM WITH
LOFT OPTION**



**DOUBLE MASTER
OPTION**

Edited: November 12, 2020

The illustrations shown on this brochure are renderings only and do not represent the final look of your home. Elevations are also subject to approval from Architectural Controls. Madison Avenue Group retains the right to alter plans, features and specifications without notice. Standard floor plan does not include basement development, deck or options in the base price. Room sizes are approximate.

BOWERY FEATURES:

- 4 Bedrooms
- 2.5 Bathrooms
- Verandah or Porch in Front Entry
- Open Concept Living Space
- Private Rear Entry Powder Room
- Central Galley Kitchen
- Main Floor Washer & Dryer
- Open to Above/Below Staircase
- Private Master Ensuite
- Generous Master Walk-in Closet

NOTES

GET IN TOUCH

Tanvi Kaur

Area Sales Manager

403-498-5719

tanvi@madisonavegroup.com

CornerBrook Show Home

16 CornerBrook Avenue NE

MADISON AVENUE GROUP

SUITE 1500, 150 9TH AVENUE SW CALGARY, AB. T2P 3H9

INFO@MADISONAVEGROUP.COM | 403-217-9970 | MADISONAVEGROUP.COM

